

The Newman Report

Paul Silvester

1st July





Update for parents and Carers 1st July

- Background
- Dinnington Site – Plans
- Newman Main School Site – Plans
- Issues
 - Transport
 - Dates
 - Safety & Wellbeing
 - Further Information
 - Questions – email office@newmanschool.co.uk

Newman Background- 1948



It has been a long time.....

Appendix IA

RECOMMENDATION FOR IMPROVING AND ADAPTATION TO THE BUILDING

The classrooms, three sides of which are glazed, offer limited storage and facilities for the display of children's work.

It is suggested that by enclosing one of the two doors opening to the corridor additional wall display space would become available.

Shelving along two sides of the glazed walls would give facilities for the display of children's models and the presentation of books.

The large glazed area in the classrooms causes noticeable fluctuations in temperature. External corridors are wind swept causing discomfort especially to young children with limited mobility.

Enclosing the corridor might avoid this and perhaps provide additional storage as well as keeping the classrooms warmer.

If children with more severe physical handicaps are to be admitted in the future certain adaptations including the construction of ramps will be necessary.

It would be advantageous if an extractor fan could be installed in the showers.

During the winter months the temperature in the Rest Room is low; some form of supplementary heat might be installed, with an installation in the blanket store.

In the Rest Room, now used for Youth Club activities, Games and Music, the lighting is inadequate and unsuitable. Strip lighting might prove an effective replacement.

Since the Youth Club use these premises at night and move from one set of buildings to another attention needs to be given to the lighting of the approach to the school and to the site generally.

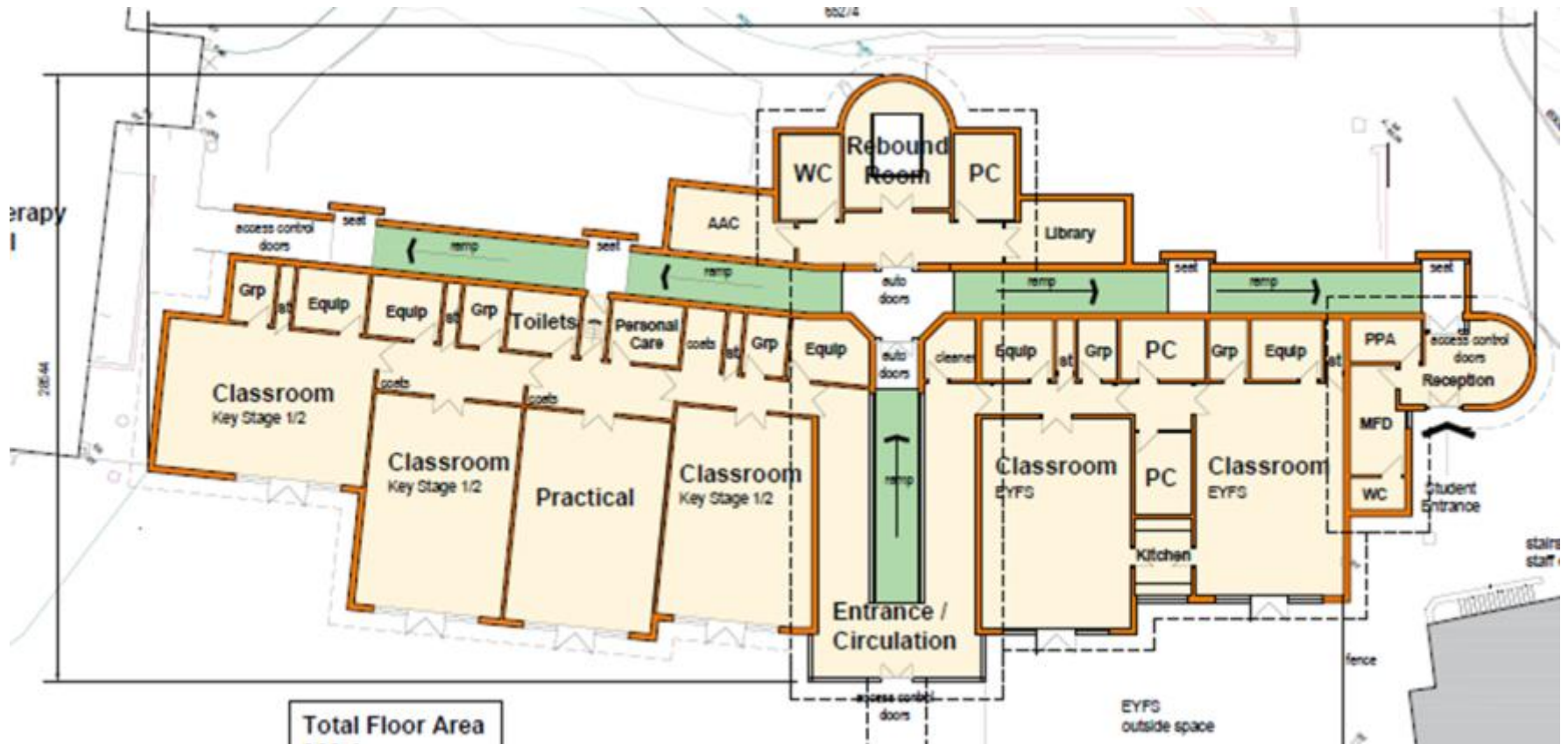


Dinnington – Newman Site

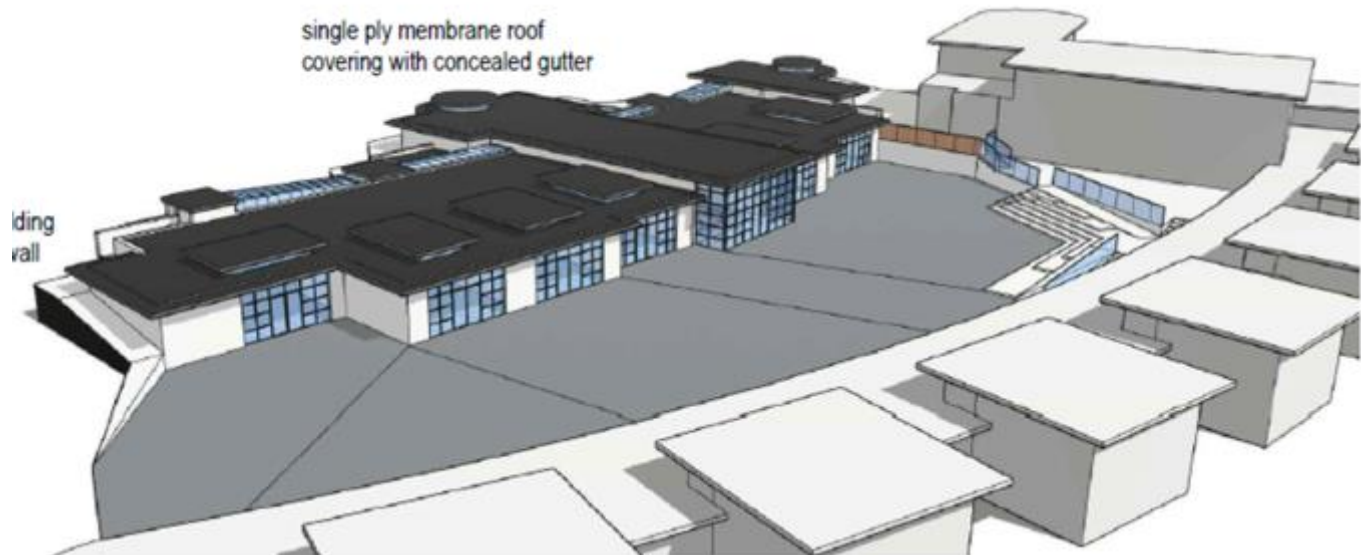
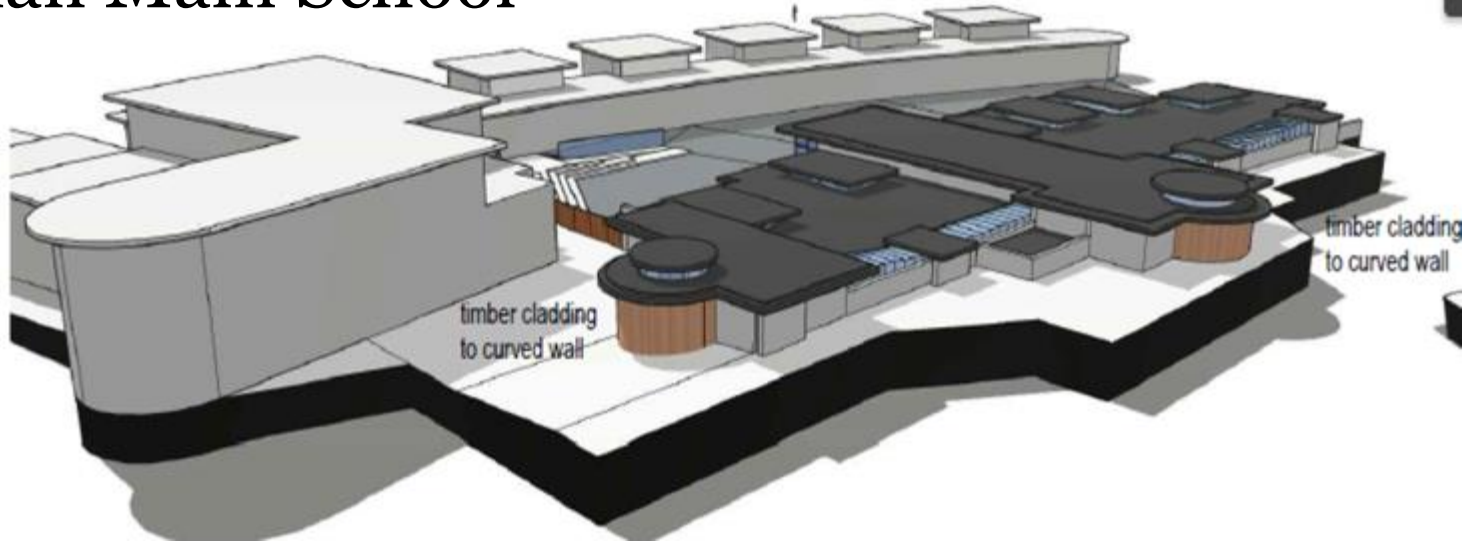
Dinnington



Newman Main School – rebuild of Primary & EYFS



Newman Main School



A long way to go...





Issues

Dinnington – What is the process going to look like – timescales.

Newman Main School Rebuild – What is the process going to look like - timescales

- Transport
- Dates
- Safety & Wellbeing
- Further Information
- Questions – email office@newmanschool.co.uk